



Moisture & Coat Weight Sensor

MCT **EXD**

The Gauging Solution for Hazardous Gas Environments

PROCESS SENSORS
CORPORATION 

MCTExD Moisture Coat Weight Sensor

The MCTExD provides secondary explosive protection. It is constructed so that all its potential ignition sources are rendered inactive ensuring that it cannot itself be the source of an explosion. The rugged flameproof enclosure will withstand the explosion pressure if an inflammable mixture were to ignite inside. The gauge is rated for zone 2 areas where there is a low probability that gas concentration will exceed the lower explosive limit, and if it does, the duration will be short.

Features

- **Flame-proof rear-hinged cast aluminium enclosure**
- **Option of 2 configurations:**
 - Smart sensor
 - Combined sensor and Operator Interface/Display unit
- **Reliable continuous measurement in the presence of flammable vapours**

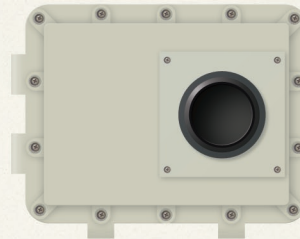
Specifications: MCTExD Moisture & Coat Weight Gauge

Measured NIR Constituents: _____ Moisture and/or coat weight
Measurement Technique: _____ NIR reflection
Calibration Codes: _____ 50
Response Time: _____ 1-99 seconds
Gauge/Product Distance: _____ 150 - 400mm (dependent on product span)
Power: _____ 90-260 VAC 50/60 Hz 40 W
Outputs: _____ Digital/ analog as required
Weight: _____ 40 Kg
Dimensions: _____ 430 x 330 x 217 mm
Operating Temperature: _____ 0-50 °C
Enclosure: _____ Cast aluminium with up to 3 3/4" NPT entries with M25 adapters.
Corrosion resistant polyester powder coated

CE Compliance:

EMC Directives EN50081-1 & EN5008-2, EN61010-1

FRONT VIEW



SIDE VIEW



Specifications: Operator Interface (not required with Smart sensor)

Display: _____ Touch Screen LCD
Weight: _____ 3.5 Kg
Outputs: _____ 4-20mA or 0-10V (for each measurement), RS232/485
Power: _____ 110/220 volts, 24vdc option
Cable length: _____ Up to 30 m (typically supplied by customer)
Keypad: _____ Access to product codes, calibration recipes and diagnostics
Enclosure: _____ Cast aluminium

Maintenance:

Warranty: _____ 2 years
Routine Cleaning: _____ Gauge viewing window must be kept clean
Calibration: _____ Recalibration is only necessary if the instrument is repaired or if product or process changes occur

Databus & Software Interfaces:

Optional Interfaces: _____ Ethernet, Devicenet, Modbus, Profibus
Software: _____ PSC Viewer s/w or OPC-DDE Server

PROCESS SENSORS CORPORATION

HEADQUARTERS

United States

Process Sensors Corporation
113 Cedar Street
Milford, MA 01757 USA
Tel: (508) 473-9901
Fax: (508) 473-0715
info@processsensors.com

Europe

Process Sensors Europe
Unit 4, Adelaide House
Corbygate Business Park
Corby, Northants NN17 5JG UK
Tel: 01536 408066
Fax: 01536 407813
infouk@processsensors.com

Eastern Europe

Process Sensors Polska
ul. Erazma z Zakroczymia 12 lokal 2
03-185 Warszawa
Tel: (48) 22 6739526
Fax: (48) 22 6739527
Gsm: (48) 509 202759
tomasz@processsensors.com

ASIA - Process Sensors Asia

PT 2328 Pinggiran Golf
Kemumin, Pengkalan Chepa
Kota Bharu, Kelantan 16100
Malaysia
T: 011 60 17620-2806
Fx: 011 60 6601 4588
hussin@processsensors.com

For more information on Process Sensors instruments and accessories, visit our website at: www.processsensors.com